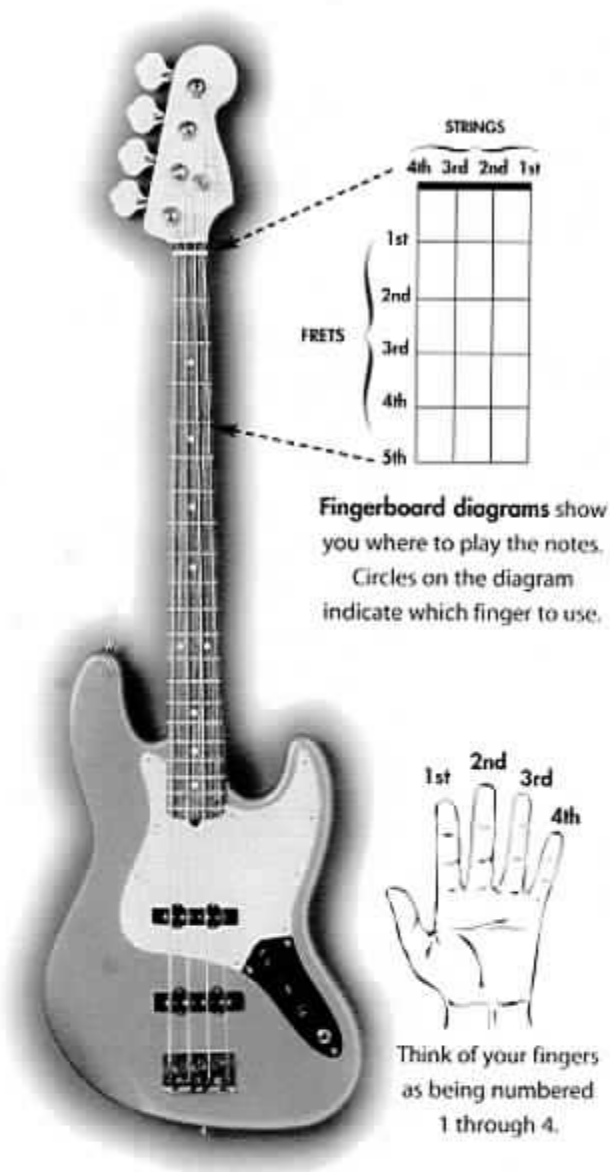
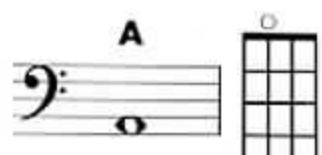
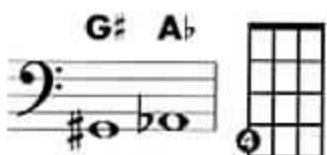
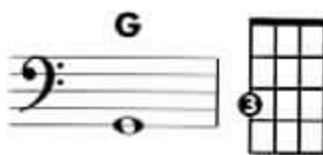
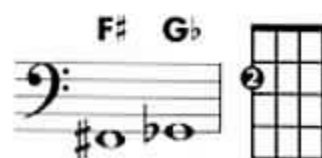
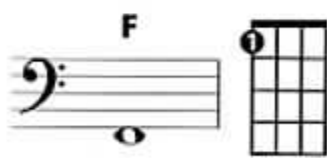
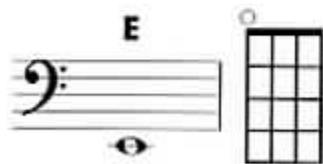


Instrument Care Reminders

- Be sure your amplifier is turned off before plugging-in or unplugging the audio cable connecting it to your instrument.
- When unplugging a cable, hold it by the plug (not by the wire).
- After playing, wipe off the instrument and strings with a clean soft cloth. Return the instrument to its case.
- Close all the latches on your case when the instrument is inside.
- Keep all 4 strings in tune (at normal tension) to prevent warping of the neck.
- Your case is designed to hold only specific objects. If you force anything else into the case, it may damage your instrument.



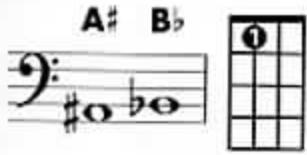
*Instrument courtesy of
Yamaha Corporation of America,
Band and Orchestral Division*



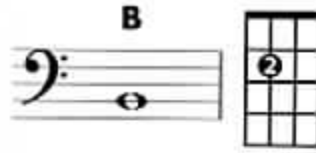
FINGERING CHART

ELECTRIC BASS

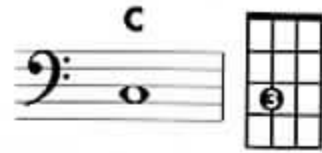
A# Bb



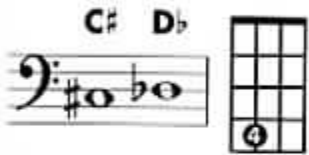
B



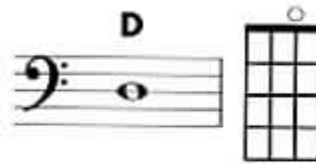
C



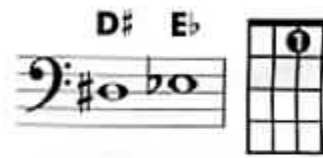
C# Db



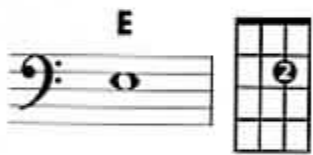
D



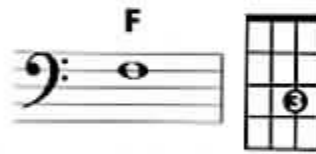
D# Eb



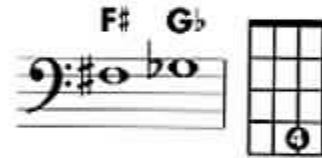
E



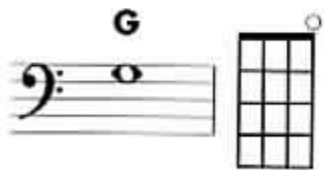
F



F# Gb



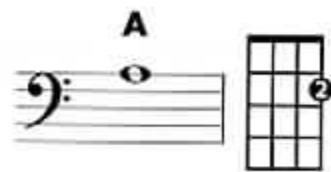
G



G# Ab



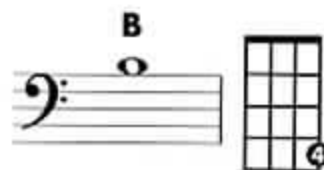
A



A# Bb



B



C

